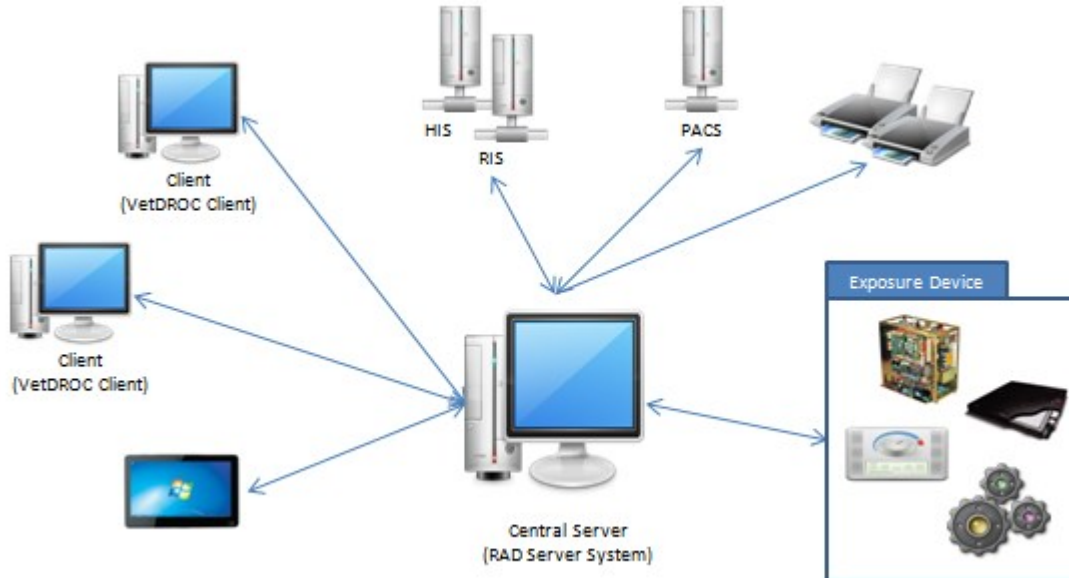


## Veterinary Digital Radiography Operator Console (VetDROC)

VetDROC provides delicate control of digital images acquisition with most effective workflow management and professional performance. Using direct-to-digital technology, images display within a few seconds after taking exposures, meanwhile, images will be optimized automatically for the details enhancement and transferred to predefined destinations for diagnosis.



Based upon the newest workflow architecture from E-COM, VetDROC also provides a brand-new operation style.



- “One Acquisition Server, Multiple Operating Client” architecture.
- Multi-monitor supported.
- Synchronization of both workflow control and data presentation among all operating clients. (including Worklist, Exam, Process, etc.)
- More convenient to plug new operating client into the vet DR system.
- Wireless network supported.

Compatible with most device in the Market. Advanced architecture enable the fast integration with new veterinary equipment; Ready for customization and localization for OEM partners of cultures.

#### Full DICOM 3.0 Compatibility

- DICOM Storage SCU, DICOM Storage SCP
- DICOM Query/Retrieve SCU, Query/Retrieve SCP
- DICOM Worklist SCU
- DICOM Print SCU

#### Customization Service

- Easy access to language localization by OEM Users
- Customization Service to develop the GUI into specific style
- Customization Service to develop the VetDROC compatible with specified Generator or other devices

#### Multi-way System deployment

- Mobile system with Pad control embedded on generator control for Equine Application.
- Desktop system with touch screen pad on Table side for small animal.
- Retrofit system with additional pad attached to Table side.

#### a) Software standard specifications

No	Features	Description
1.	<b>Worklist</b>	<ul style="list-style-type: none"> <li>- Exhaustive protocols designed for most popular breeds, i.e. Equine, Canine, Feline list and others</li> <li>- Modify the registered user basic information</li> <li>- Compared to show the image of two users</li> <li>- Delete work task</li> <li>- Protection work tasks to avoid being deleted</li> <li>- Auto fill in the basic information by opening an existed study</li> <li>- Search control with multiple searching criteria</li> <li>- Auto registration of exam data from HIS/RIS</li> <li>- Image import</li> <li>- Image export &amp; burn</li> <li>- In the history list shows the completed task</li> </ul>
2.	<b>Registration</b>	<ul style="list-style-type: none"> <li>- Local registration designed for veterinary use, such as owner's name, weight fields, etc.</li> <li>- Emergency registration</li> <li>- For the user to select a different protocol</li> </ul>
3.	<b>Exam</b>	<ul style="list-style-type: none"> <li>- Visible protocols can be easy chose for specific breed</li> <li>- Programmed default exposure technique, can be edited for every view</li> <li>- Append new exam- protocol temporarily. Protocol clone</li> <li>- Image accept &amp; reject</li> <li>- Changes the accept or reject status of the image</li> <li>- Delete the unexposed protocol</li> <li>- Send the selected image to archive node</li> <li>- Sample image for Position Guide &amp; Reference Guide</li> <li>- X-ray technique factors setting and displaying (APR function )</li> <li>- Synchronization among multiple operating client ( including hardware control, real-time data and user operation)</li> </ul>
4.	<b>Image Process</b>	<ul style="list-style-type: none"> <li>- Add/Remove marks or comments</li> <li>- Image move, rotate, flip, crop, zoom, pan, invert, mirror</li> <li>- Scale correction</li> <li>- Accept the image or reject</li> </ul>

	<ul style="list-style-type: none"> <li>- Image reprocess and save as new copy</li> <li>- Synchronization among multiple operating client</li> </ul>
	<ul style="list-style-type: none"> <li>- Symphony TM, an advanced post-processing module</li> <li>- Symphony TM processing is to improve image contrast, adjust dynamic range, enhance the details and reduce the noise, so that it can produce the most high-quality images for interpretation. It expands the visibility of low-contrast structures such as tissue and vessels, while maintaining and enhancing the visibility of high-contrast structures such as bone. By optimizing the presentation of radiographic data, Symphony TM makes it easier for the radiologist to read images and make proper diagnoses.</li> </ul>
5. Print	<ul style="list-style-type: none"> <li>- Sending image to Vet-PACS</li> <li>- Setting Print Type</li> <li>- Dicom Printing</li> <li>- Windows Printing</li> <li>- True size for printing</li> <li>- Print layout, Show/Hide lable, portrait/landscape, rotate, zoom, pan, invert, etc.</li> <li>- Image export</li> <li>- Image outputting management for CD/DVD storage, saved as JPG, BMP, TIFF formats</li> </ul>
6. Image Review	<ul style="list-style-type: none"> <li>- Multi-format layout viewing</li> <li>- Image rotate, flip, crop, magnifier, zoom, pan, invert</li> <li>- Send image/Export image/Burn image</li> <li>- Image display settings: true size, fit to windows</li> <li>- Show Dicom information</li> <li>- Open a Dicom image/save image to Dicom files/save raw image to local media</li> <li>- Setting raw image as demo image</li> <li>- Close current work</li> <li>- Send the selected image to archive node</li> <li>- View image(DICOM Viewer software)</li> <li>- Image Measurement: angle/liner measurement, hip study</li> <li>- Image selection type: current image, current selected images, all images</li> </ul>
7. System Management	<ul style="list-style-type: none"> <li>- Detector calibration</li> <li>- Statistics</li> <li>- Task Queue</li> <li>- Change Password</li> </ul>

8.	<b>Standard</b>	-	DICOM Print feature
	<b>Supported</b>	-	DICOM Storage SCU, DICOM Storage SCP
9.	<b>Accessory</b>	-	Exposure Synchronization box, connected between the DROC, Generator, FPD etc.
		-	Touch Screen / UMC Screen

## b) Options

10.	<b>DICOM Worklist</b>	-	Remote register: Support link with RIS/HIS of different providers and get DICOM Worklist by configuring DROC
11.	<b>Film Composer</b>	-	Free to split the film into various layout
		-	Windows print
		-	Image windowing
		-	Image zooming, batch zooming
		-	Image rotation
		-	Markers hiding/showing
		-	Images adding/ deleting
12.	<b>Touch Sreen</b>	-	Additional Monitor which mounted on Table(Tube) side
		-	Software standard specification with feature 1 (worklist), 2 (exam), 3 (image process)
13.	<b>Pad</b>	-	Additional Pad which can mounted on generator side with WIFI connection.(eg. Miakasa Portable Generator)
		-	Software standard specification with feature 1 (worklist), 2 (exam), 3 (image process), 4.(generator)

## c) Recommended Hardware Environments

14.	<b>Host PC</b>	●	CPU: Pentium dual core 2.0GHz or above
		●	Memory: $\geq 2$ GB
		●	HD: $\geq 100$ GB
		●	Display: 1280*1024 resolution;
		●	OS: Windows XP, windows7
		●	At least 1 serial port
		●	Optional disk array
15.	<b>Client PC</b>	●	E-COM license Dongle is necessary
		●	CPU: Pentium dual core 2.0GHz or above
		●	Memory: $\geq 2$ GB
		●	HD: $\geq 100$ GB

16. **SubClient PAD**

- Display: 1280\*1024 resolution;
- OS: Windows XP, windows7
- At least 1 serial port
- CPU: Intel Atom Z530 or above
- Memory:  $\geq 1$ GB
- HD:  $\geq 16$ GB
- Display: 1280\*1024 resolution;
- Screen size: >7.9Inch
- OS: Windows 7
- WiFi